

Bujan: Arrival

Background

A nation located somewhere in the Shinobi World known about this nation, including its location, composition, and recent events, pieces of history have begun to come to light. An operation known as *Operation: Lust* was conducted to remove certain inhabitants from the face of the continent to begin the present day.

In the year 14 V.E., many broken canoes and rafts were found in the Region of Arbor. After some shinobi made these discoveries, events unfolded. These events brought unrest and adventure to the region. These events are all connected back to a mysterious land, a nation, including its location, composition, and inhabitants, which consists of members of four different factions: The Mizushinzen, The Nezumiya, The Hanasojo, and The Koseki.

The Factions

Mizushinzen

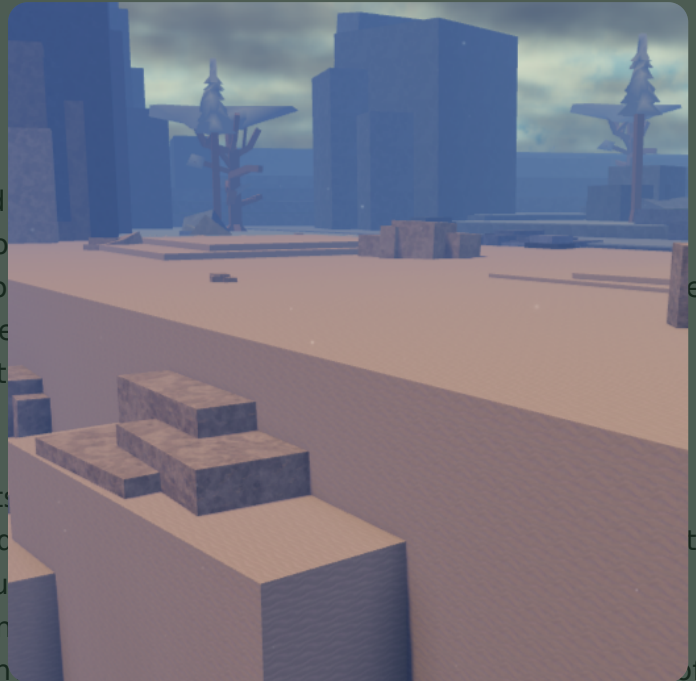
A faction consisting of fishermen, known for their vast knowledge of the sea and the environment. They are very passionate about preserving nature and have conducted large amounts of research dedicated to its upkeep. The Mizushinzen entered the Main Land to find new evolutions of plants that could prove useful in strengthening soldiers of their faction with enough food to fight the war.

Koseki

A faction consisting of miners and blacksmiths, known for their vast knowledge about minerals and explosives. They were originally the most populated faction in Bujan, thriving off their trade routes with other factions from their harvested natural resources. However, during the war, their faction was brought to near extinction, and so the Koseki entered the Main Land in hopes of finding unique minerals they can forge into weapons to fight the war.

Nezumiya

A faction consisting of bandits and thieves, known for their ruthless behavior and swift technique. They are very simple-minded and are passionate about gathering different artifacts, weapons, and



DATE	14-15 VE
LOCATION	Main Land
DEATHS	25+ Shinobi

blood. They are believed to be the initial cause of the war in Bujan with their evil intentions. The Nezumiya entered the Main Land in an attempt to stop other factions from obtaining resources to fight them, as well as asserting their power in their attempt at world domination.

Hanasojo

A faction consisting of religious worshippers, known for their commitment to their religion and the power they draw from it. They worship sakura trees, with its purpose unknown. However, some shinobi have found that these trees grant the worshippers strength. The reason for Hanasojo entering the Main Land is unknown.

Greeting and Grit

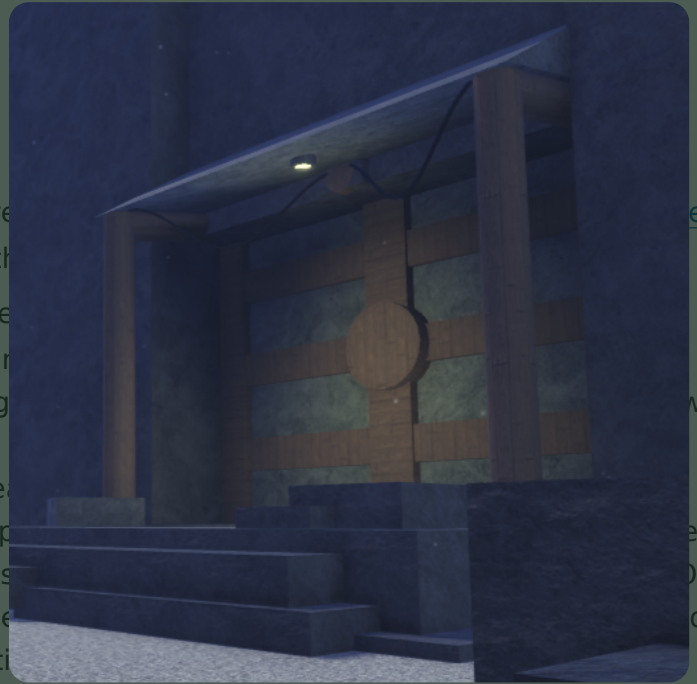
As the factions that hailed from Bujan began to traverse their way through the Main Land, members of an [Iwagakure](#) scouting patrol came across members of the Koseki in the Northern Hills. The Koseki explain their situation to Tsuchikage [Ni Miyajima](#), who refuses to lend them their aid. However, shinobi from [Sungakure](#) and [Konohagakure](#) are more welcoming to the Hanasojo and Mizushinzen factions. Disagreements between the villages begin to rise after the handling of the mysterious factions becomes public. Tensions began to brew, but while the villages were talking about the disagreements, multiple lone forces sat quietly in the background. One of those forces goes by the name of **Akei** from the Hanasojo faction. The mysterious blindfolded figure had a strong connection with the sakura tree, and invited shinobi to partake in his meditation with him in hopes of gaining some source of newfound strength. Another one goes by the name of **Kenta**, a smart researcher from the Mizushinzen faction who cooperated with the [Konohagakure](#) and [Kirigakure](#) Research Divisions of various research topics. While these forces began to move, another loomed in the darkness. The factions and the villages scheduled a meeting, which was ambushed by none other than the Nezumiya. There were both shinobi and faction casualties as the Nezumiya made their presence known.

Purple Skies

The Nezumiya unleash a reign of terror upon the Main Land, terrorizing the shinobi and civilians of each village. As the faction made their statement, a group of shinobi led by Kazekage [Aetamos Yome](#) were able to slaughter an important member of the Nezumiya, who turns out to be **Alvus Houki**. This sparks great confusion and unrest amongst the shinobi, as Alvus Houki was a known name that was in Main Land for quite some time. Who were the Nezumiya connected to? Who is Nezumiya? Upon this death, the Nezumiya make it known that they are open to allow shinobi to join their power cause. Three shinobi successfully make their way into the ranks. After their recruitment, the Nezumiya continued to bombard the nations with indirect terror, but then there was a change. The Nezumiya began to organize themselves, and they established a fortress in the Ancient Ruins.

Operation: Unchain

During one of the Nezumiya's missions, they were Elite Oribe and Raiden Yuki. In another mission, the Lee from [Konohagakure](#). The kages of each of the Shinobi Alliance in an attempt to save the three in nearly indestructible door with no way of opening they were to save their comrades. Enter **Toshio**, Nezumiya who gave the shinobi a chance. He cre and if they were correct, they would be able to op shinobi were successful in completing said riddles one fruitful day, the Great Shinobi Alliance storme not go in without any resistance. Multiple casualti the three individuals in question was able to survive the major battle.



Operation: Takeover

Following the previous operation, the shinobi were full of hatred towards the Nezumiya, who attempted to take a step back within their fortress to regroup. However, Kazekage **Massimo Yome** had other plans. He rallied up the alliance once more to fight the Nezumiya in multiple waves, resulting in many casualties on both sides, including Kenta. An important figure within the Nezumiya, Commander **Shuen Iwatsuki**, showed face. With his appearance, some shinobi began to question his tactics and why he would continue his pursuit of revenge. The battle was over, so why continue to fight? More questions continued to arise as a member of the [Land of Mountains](#), Alonza Uzumaki, was killed, and with his *Amulet* being taken alongside it.

DATE	14-15 VE
LOCATION	Main Land
DEATHS	45+ Shinobi

The Subtleness

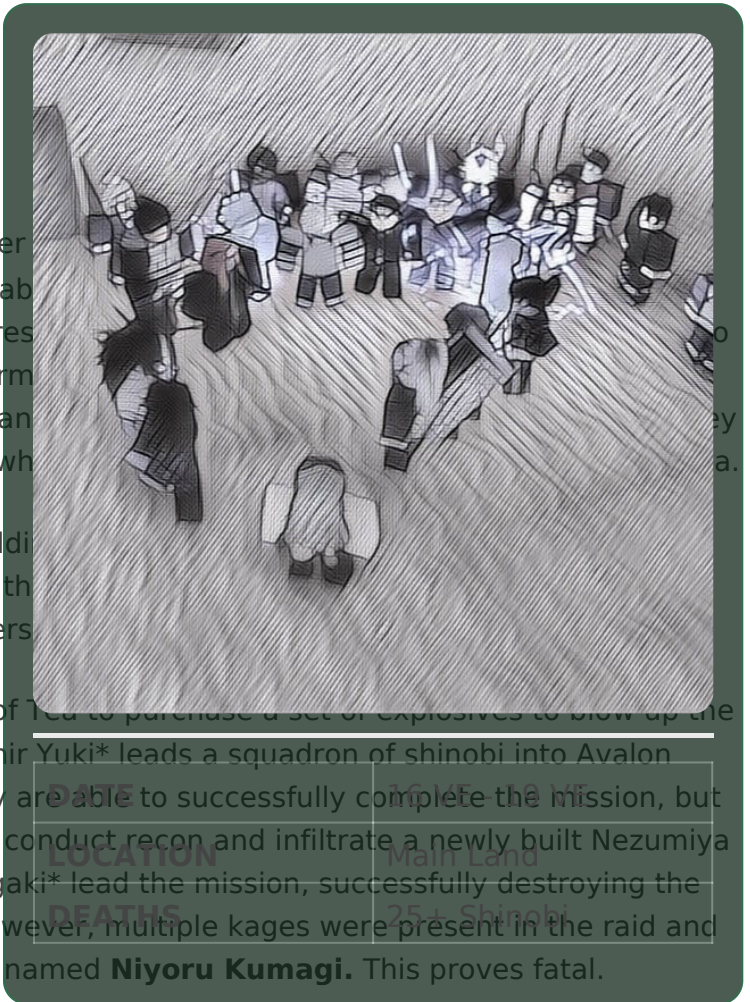
After the operation concluded, the shinobi felt helpless. What can we do? Is there any hope? It didn't help either that [Iwagakure's Akai Utsuwa](#) was also taken by the Nezumiya. Luckily, there was nothing to worry about. Throughout a couple of months in the Shinobi World, it seemed that the factions disappeared. Where did they go? What happened to them?

Operation: Tiasou

This operation was started in 16 V.E. by a former member of the shinobi, they were able to find information about *Moya*, which is found inside the Nezumiya Fortress. They try and formulate a counterattack against a dormant threat. After a disappearance, the shinobi reunite with Flame and form a band together to create the **Core Operation**, which is the main focus of the story.

After a few years of the Operation: Tiasou unfolding, during her absence, **Hinizami Uyero** takes the helm, then she leads the operation by assigning multiple squadron leaders to different missions.

Their first mission is to navigate into the Land of Tea to purchase a set of explosives to blow up the entrance to the Nezumiya Fortress. Leader **Amir Yuki** leads a squadron of shinobi into Avalon where they are met with some resistance. They are able to successfully complete the mission, but they suffer one loss. Their second mission is to conduct recon and infiltrate a newly built Nezumiya outpost. Leaders **kyrone A** and **Agent Hoshigaki** lead the mission, successfully destroying the outpost and obtaining valuable information. However, multiple kages were present in the raid and they make a decision to release a mysterious figure named **Niyoru Kumagi**. This proves fatal.



The Core Operation's final mission is to infiltrate the Nezumiya fortress and seize control of the artifact [Akai Utsuwa](#). As the mission is underway, the operation fails to recognize a large group of Nezumiya bandits escaping out of the fortress, which proves detrimental to their operation. The shinobi rush to pursue the bandits, traveling through the Deep Desert and Land of Tea before reaching the Nezumiya's final destination, Port Lapis. The shinobi are stopped by military guards, who provide entry to the bandits but bar the shinobi from entering. The operation has failed, and the artifact, gone.

With one artifact gone, will the shinobi be able to successfully capture the [other](#)?

Revision #4

Created 2026-02-19 20:29:36 UTC by Admin

Updated 2026-02-19 20:41:29 UTC by Admin